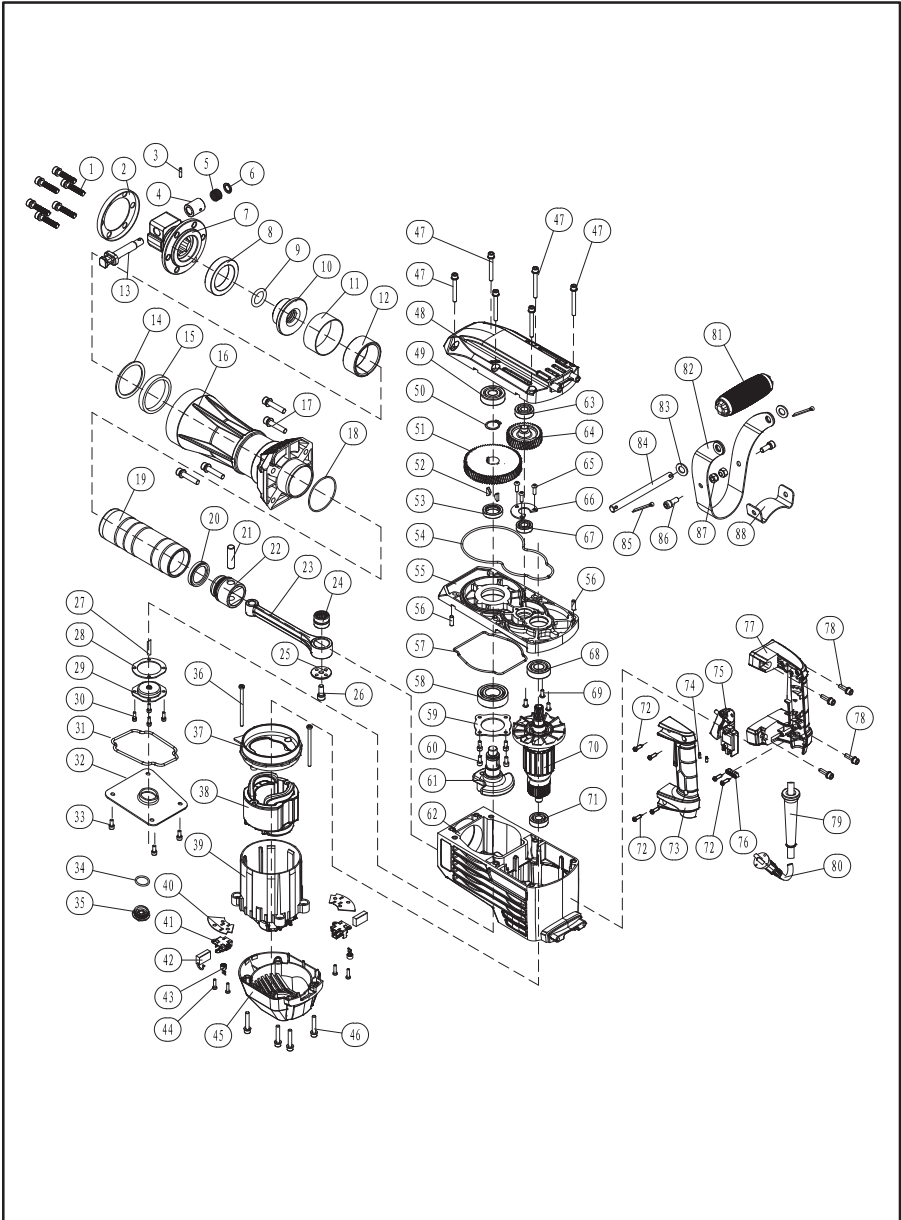


1500W DEMOLITION HAMMER

EN

EXPLOSIVE VIEW OF WD011430600



1500W DEMOLITION HAMMER

EN

PART LIST OF WD011430600

NO	DESCRIPTION	Q'TY	NO	DESCRIPTION	Q'TY
1	Hexagon socket bolt	6	41	Brush holder	2
2	Cover	1	42	Carbon brush	2
3	Cylindrical pin	1	43	Disc spring	2
4	Lock pin sleeve	1	44	Screw	4
5	Spring	1	45	Rear cover of motor	1
6	Washer	1	46	Hexagon socket bolt	4
7	Bit holder	1	47	Hexagon socket bolt	6
8	Shock pad	1	48	Gear box cover	1
9	O-ring	1	49	Bearing 6302	1
10	Shank sleeve	1	50	Circlip for shaft	1
11	Rubber ring	1	51	Gear	1
12	Split ring	1	52	Woodruff key	2
13	Bit retainer	1	53	Distance ring	1
14	Washer	1	54	Seal ring	1
15	Buffer ring	1	55	Middle cover	1
16	Cylinder case	1	56	Cylindrical pin	2
17	Hexagon socket bolt	4	57	Seal ring	1
18	O-ring	1	58	Bearing 6205	1
19	Cylinder	1	59	Bearing press plate	1
20	Seal ring	1	60	Hexagon socket bolt	4
21	Piston pin	1	61	Crank shaft	1
22	Piston	1	62	Gear box	1
23	Connecting rod	1	63	Bearing 6201	1
24	Needle bearing 1820	1	64	Gear	1
25	Connecting rod washer	1	65	Screw	3
26	Hexagon socket bolt	1	66	Bearing press plate	1
27	Oil wick	1	67	Bearing 6001	1
28	Gasket	1	68	Bearing 6203	1
29	Press plate of oil wick	1	69	Hexagon socket bolt	3
30	Hexagon socket bolt	4	70	Rotor	1
31	Seal ring	1	71	Bearing 6201	1
32	Cover of oil box	1	72	Screw	6
33	Hexagon socket bolt	4	73	Handle cover	1
34	O-ring	1	74	Rubber column	2
35	Oil gauge	1	75	Switch	1
36	Screw	2	76	Cable clamp	1
37	Fan baffle	1	77	Handle	1
38	Stator	1	78	Hexagon socket bolt	4
39	Insulation sleeve	1	79	Cable protector	1
40	Mounted plate	2	80	Cable and plug	1