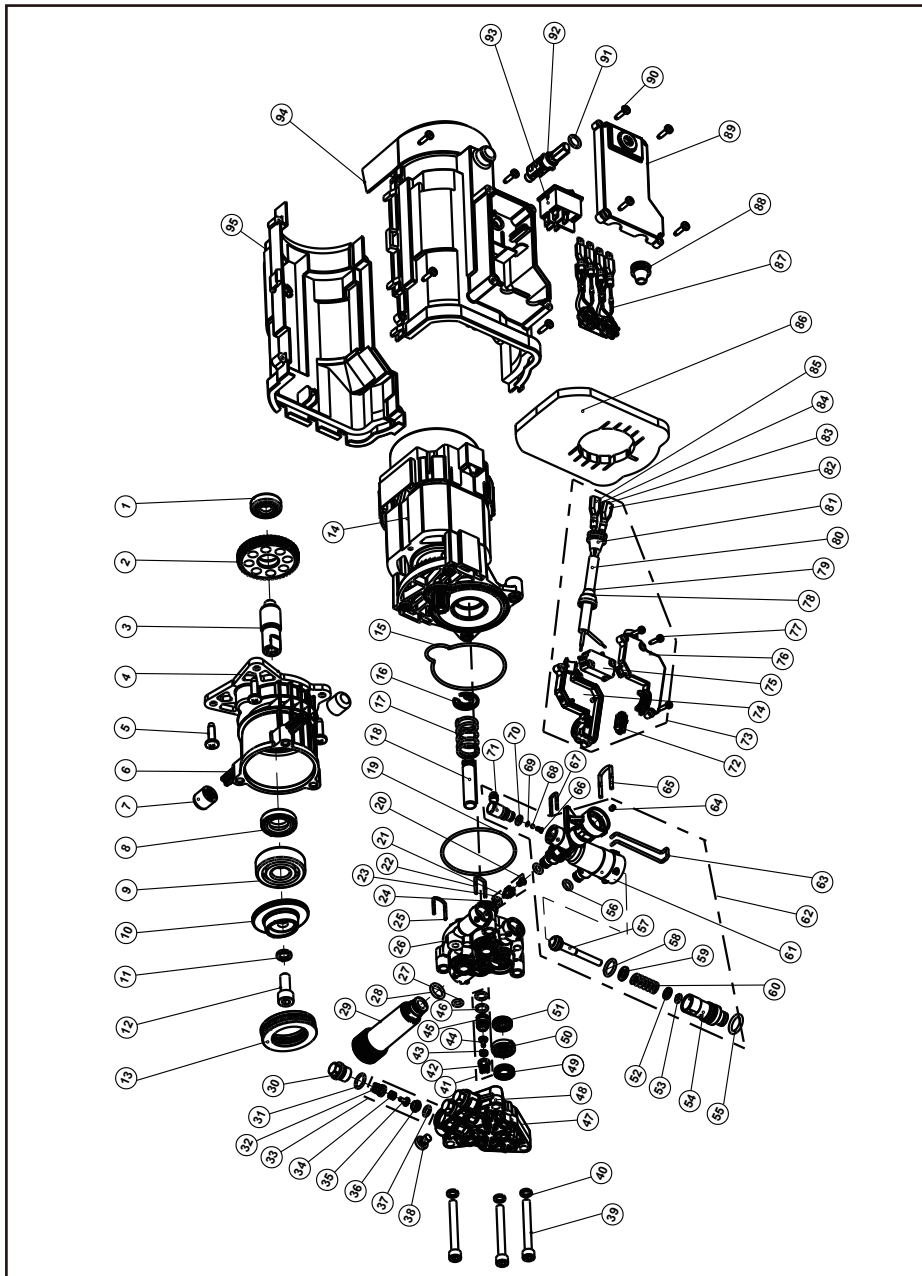


## MOTER PUMP EXPLOSIVE VIEW OF WD020412000



**MOTER PUMP PART LIST OF WD020412000**

<b>NO</b>	<b>DESCRIPTION</b>	<b>Q'TY</b>	<b>NO</b>	<b>DESCRIPTION</b>	<b>Q'TY</b>
1	Bearing	1	41	Inlet checking valve assy	3
2	Big dear	1	42	Checking valve bracket	1
3	Gear shaft	1	43	Checking valve spring	1
4	Oil cylinder assy	1	44	Checking valve core	1
5	Bolt	4	45	Inlet checking valve seat	1
6	Oil cylinder	1	46	O-ring	2
7	Damping ring	2	47	Pump	1
8	Oil seal	1	48	Pump cover	1
9	Bearing	1	49	Oil seal	3
10	Swash plate	1	50	Oil seal bracket	3
11	Circlip	1	51	Plunger oil seal	3
12	Bolt	1	52	Relief valve washer	1
13	Bearing	1	53	O-ring	1
14	Motor	1	54	Relief valve cap	1
15	Seal ring	1	55	O-ring	1
16	Plunger chuck	3	56	O-ring	2
17	Plunger spring	3	57	Relief valve core	1
18	Plunger	3	58	O-ring	1
19	O-ring	1	59	Limit ring	1
20	Back pressure valve spring	1	60	Relief valve spring	1
21	Back pressure valve core	1	61	Outlet hose	1
22	U pin	2	62	Outlet hose assy	1
23	Back pressure valve assy	1	63	Bayonet lock	1
24	O-ring	1	64	Siphon nozzle	1
25	U pin	1	65	U pin	1
26	Pump body	1	66	Siphon spring	1
27	O-ring	1	67	U pin	1
28	O-ring	1	68	Stainless steel ball	1
29	Inlet hose	1	69	O-ring	1
30	Checking valve cap	3	70	O-ring	1
31	O-ring	3	71	Siphon elbow	1
32	Checking valve bracket	1	72	On-off switch push rod	1
33	Outlet checking valve assy	3	73	On-off switch assy	1
34	Checking valve spring	1	74	Switch down cover	1
35	Checking valve core	1	75	On-off switch (welded)	1
36	Checking valve seat	1	76	Switch up cover	1
37	O-ring	1	77	Bolt	3
38	Bolt	1	78	Sleeve for switch	1
39	Bolt	3	79	Switch wire	1
40	Spring washer	3	80	Switch wire assy	1

**1400W /2000W/ 2800W HIGH PRESSURE WASHER****ENG**

81	Sleeve for outlet wire	1	89	Switch cover	1
82	Male terminal	1	90	Bolt	8
83	Sleeve for male terminal	1	91	O-ring	1
84	Sleeve for female terminal	1	92	Switch driving lever	1
85	Female terminal	1	93	Main switch	1
86	Fan cover filter	1	94	Fan cover up	1
87	Capacitor and inductor assy	1	95	Fan cover down	1
88	Outlet wire sleeve	1			