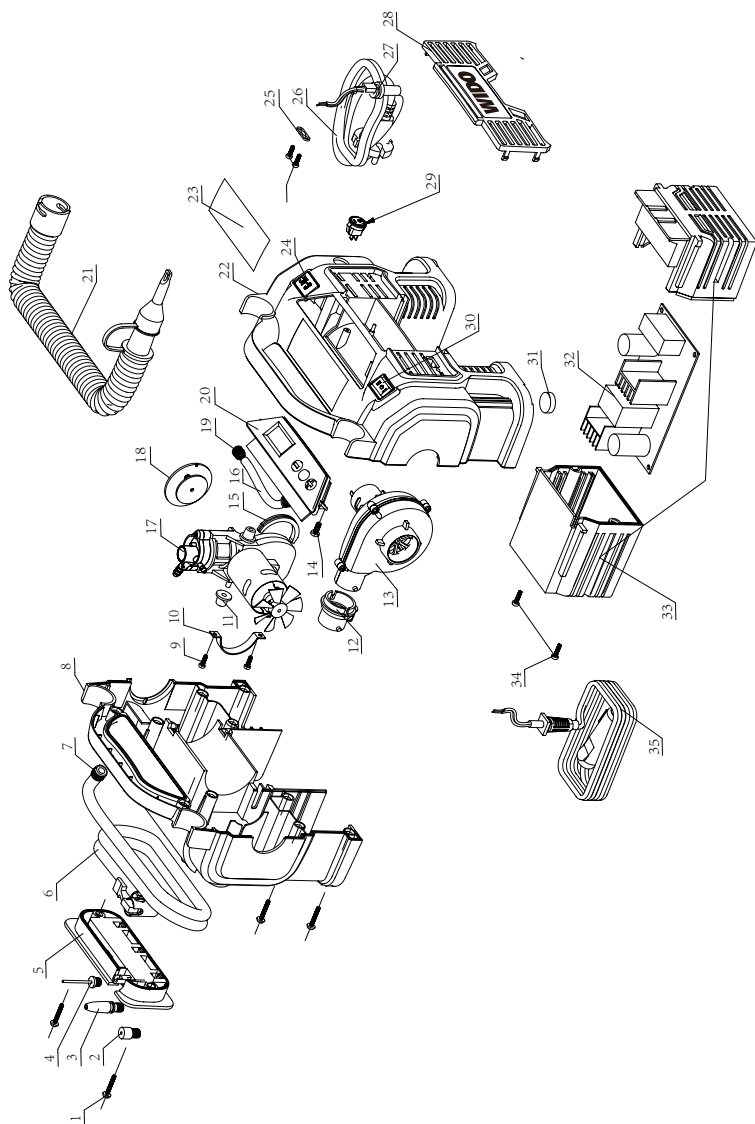


## EXPLOSIVE VIEW



## PART LIST

NO	DESCRIPTION	Q'TY	NO	DESCRIPTION	Q'TY
1	Screw	12	19	Clamp of rubber tube	2
2	Presta valve adaptor	1	20	Control panel assy	1
3	Tapered adaptor	1	21	Low pressure hose	1
4	Ball needle	1	22	Front housing	1
5	Accessory storage box	1	23	Label	1
6	Inflate hose with universal valve	1	24	AC and DC switch or light switch	1
7	Riveting ring	1	25	Cable clamp (Only for WD050521211)	1
8	Rear housing	1	26	Cable and plug (Only for WD050521211)	1
9	Screw	4	27	Cable protector (Only for WD050521211)	1
10	Fixing ring for inflate motor	1	28	Front cover	1
11	Rubber pads	2	29	LED work light switch (Only for WD050521211)	1
12	Low pressure hose connection	1	30	Blowing and inflating switch	1
13	Blower assy	1	31	Foot pad	4
14	Screw	2	32	Power panel (Only for WD050521211)	1
15	Pad for inflate motor	1	33	Box for power panel (Only for WD050521211)	1
16	Rubber tube	1	34	Screw (Only for WD050521211)	2
17	Inflate pump assy	1	35	12V DC vehicle cord and connector	1
18	LED work light	1			