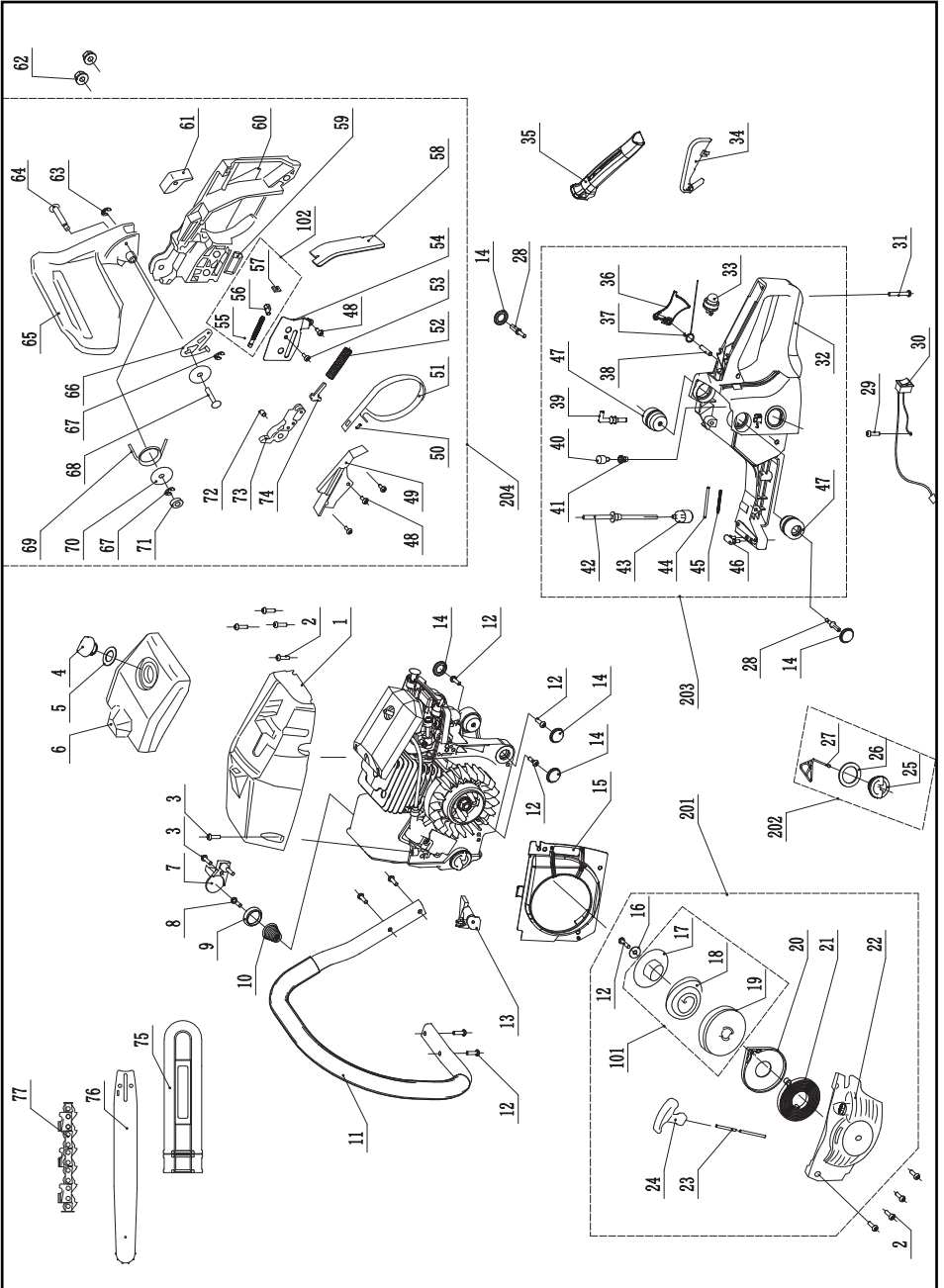


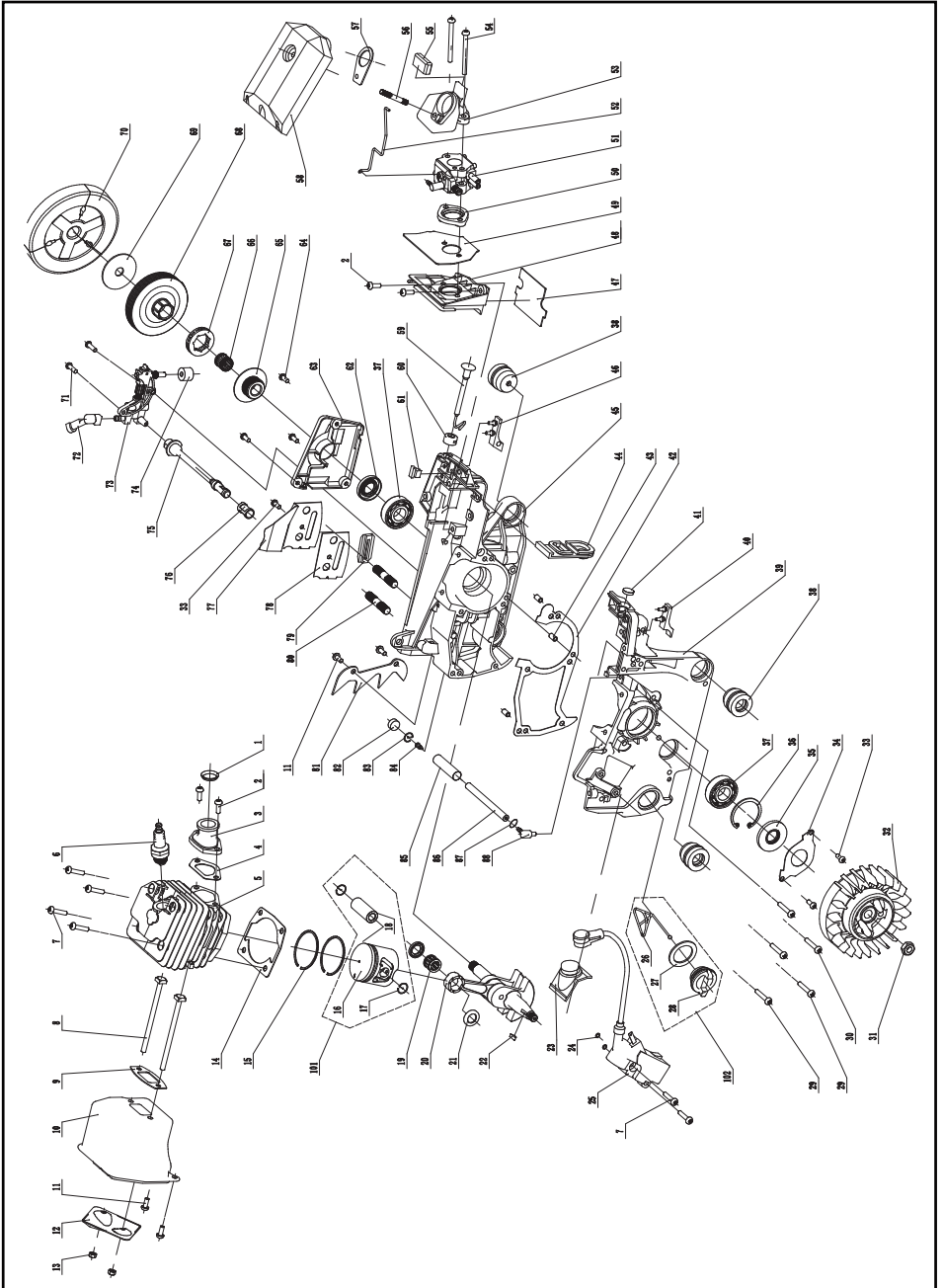
CHAIN SAW EXPLOSIVE VIEW OF WD020812055



CHAIN SAW PART LIST OF WD020812055

NO	DESCRIPTION	Q'TY	NO	DESCRIPTION	Q'TY
1	Cylinder cover	1	40	Balancer assy	1
2	Screw	9	41	Balancer seat	1
3	Screw	2	42	Fuel pipe	1
4	Air filter cover knob	1	43	Fuel filter	1
5	Washer	1	44	Fuel pipe	1
6	Air filter cover	1	45	Fuel pipe spring	1
7	Chain catcher	1	46	Stopper	1
8	Screw	1	47	Fuel tank damper	2
9	Spring base	1	48	Screw	4
10	Tower spring	1	49	Brake spring cover	1
11	Front handle	1	50	Pin	1
12	Screw	8	51	Brake band	1
13	Guide sleeve	1	52	Brake spring	1
14	Damper cover	5	53	Screw	1
15	Fan cover	1	54	Chain adjusting cover	1
16	Washer	1	55	Chain tensioning screw	1
17	Ratchet wheel	1	56	Tensioning pin	1
18	Start spring	1	57	Retaining plate	1
19	Starter wheel	1	58	Sawdust protector	1
20	Spring case	1	59	Chain guide	1
21	Start spring	1	60	Brake cover	1
22	Starter cover	1	61	Rubber block	1
23	Start rope	1	62	Nut	2
24	Starter handle	1	63	Circlip	1
25	Fuel tank cap	1	64	Guard axle	1
26	Fuel tank cap washer	1	65	Front hand guard	1
27	Oil cap hanger	1	66	Stop plate	1
28	Stud	2	67	Circlip	2
29	Screw	1	68	Pin	1
30	Switch	1	69	Torsional spring	1
31	Screw	1	70	Washer	2
32	Fuel tank	1	71	Rubber cap	1
33	Primer pump	1	72	Bush	1
34	Trigger release	1	73	Brake lever	1
35	Handle cover	1	74	Break push rod	1
36	Throttle trigger	1	75	Bar protector	1
37	Trigger spring	1	76	Guide bar	1
38	Trigger pin	1	77	Saw chain	1
39	Connector of fuel pipe	1			

ENGINE EXPLOSIVE VIEW OF WD020812055



ENGINE PART LIST OF WD020812055

NO	DESCRIPTION	Q'TY	NO	DESCRIPTION	Q'TY
1	Lining ring	1	43	Location pin	3
2	Screw	4	44	Dust shield	1
3	Inlet pipe	1	45	Right crankcase	1
4	Gasket	1	46	Right anti-vibration plate	1
5	Cylinder	1	47	Bracket gasket	1
6	Spark plug	1	48	Carburetor bracket	1
7	Screw	6	49	Asbestos mat	1
8	Screw	2	50	Spacer	1
9	Gasket	1	51	Carburetor	1
10	Muffler	1	52	Throttle rod	1
11	Screw	4	53	Manifold	1
12	Muffler cover	1	54	Screw	2
13	Nut	2	55	Manifold damper	1
14	Cylinder gasket	1	56	Stud	1
15	Piston ring	2	57	Rubber gasket	1
16	Piston	1	58	Air filter	1
17	Circlip	2	59	Choke rob	1
18	Poston pin	1	60	Choke rob damper	1
19	Needle bearing	1	61	Anti-vibration plate	1
20	Crankshaft	1	62	Oil seal	1
21	Washer	2	63	Oil pump cover	1
22	Half round key	1	64	Screw	3
23	Ignition cover	1	65	Worm gear	1
24	Washer	2	66	Needle bearing	1
25	Ignition coil	1	67	Sprocket	1
26	Oil cap hanger	1	68	Clutch drum	1
27	Oil cap washer	1	69	Washer	1
28	Oil cap	1	70	Clutch assy	1
29	Screw	2	71	Screw	2
30	Screw	3	72	Oil pump pipe	1
31	Nut	1	73	Oil pump	1
32	Flywheel	1	74	Sealed sponge	1
33	Screw	3	75	Oil pipe	1
34	Press plate	1	76	Oil filter	1
35	Oil seal	1	77	Guide plate	1
36	Circlip	1	78	Guide plate gasket	1
37	Bearing 6202	2	79	Chain guide	1
38	Crankcase damper	3	80	Stud	2
39	Left crankcase	1	81	Spike bumper	1
40	Left anti-vibration plate	1	82	Sponge	1
41	Rubber plug	1	83	Oil tank valve retainer	1
42	Crankcase gasket	1	84	Oil tank valve	1

85	Heat resistance pipe	1	87	Spring	1
86	Hose pipe	1	88	Elbow	1